

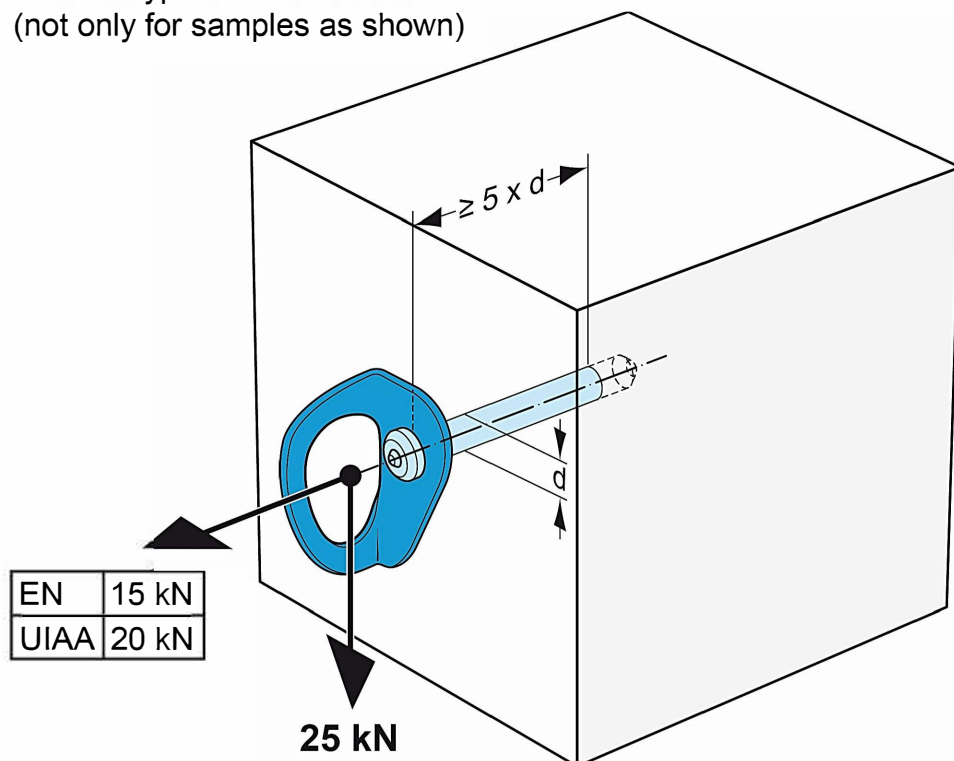


Note: This representation of EN 959 and UIAA 123 does not contain the full details of the test methods and requirements in these standards; it gives only a simplified pictorial presentation.

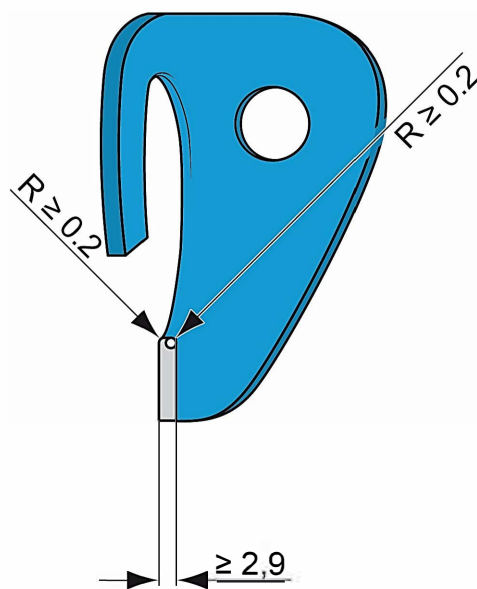
For full details, EN 959: 2018 and UIAA 123: 2018 should be consulted. © UIAA, 2020

Strength Requirements

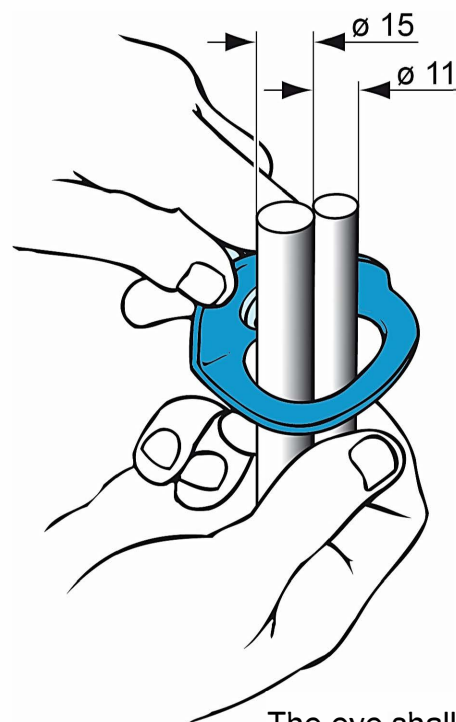
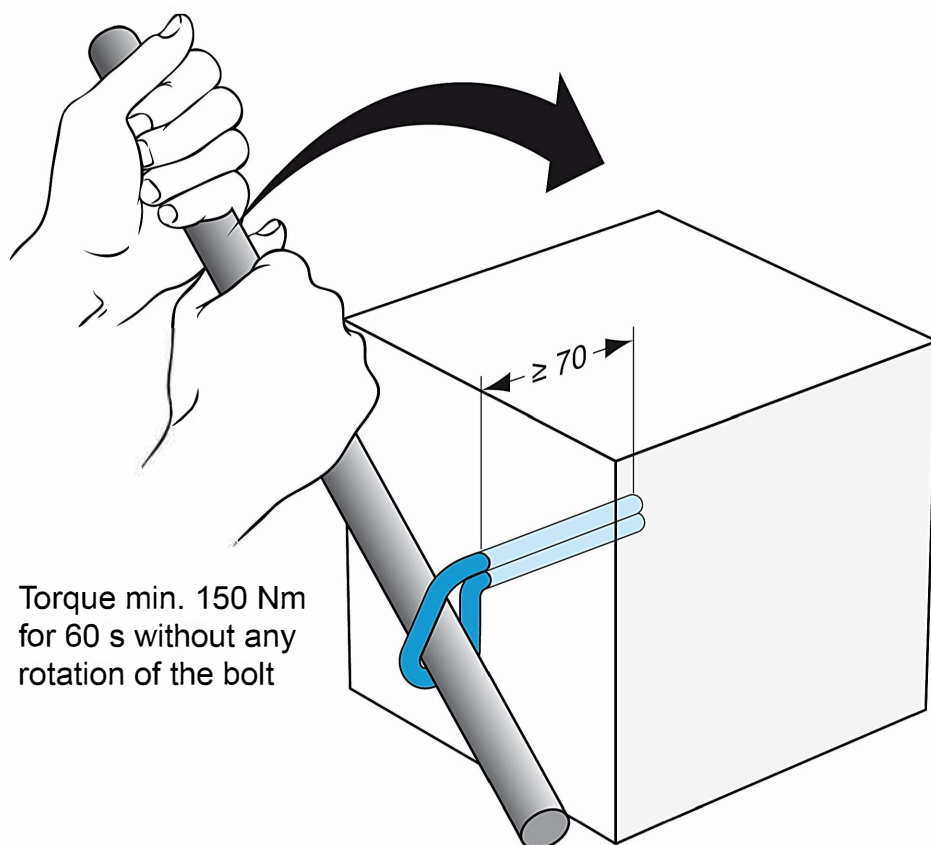
for all types of rock anchors
(not only for samples as shown)



Design Requirements



Additional UIAA Requirement for Glue-in Bolts



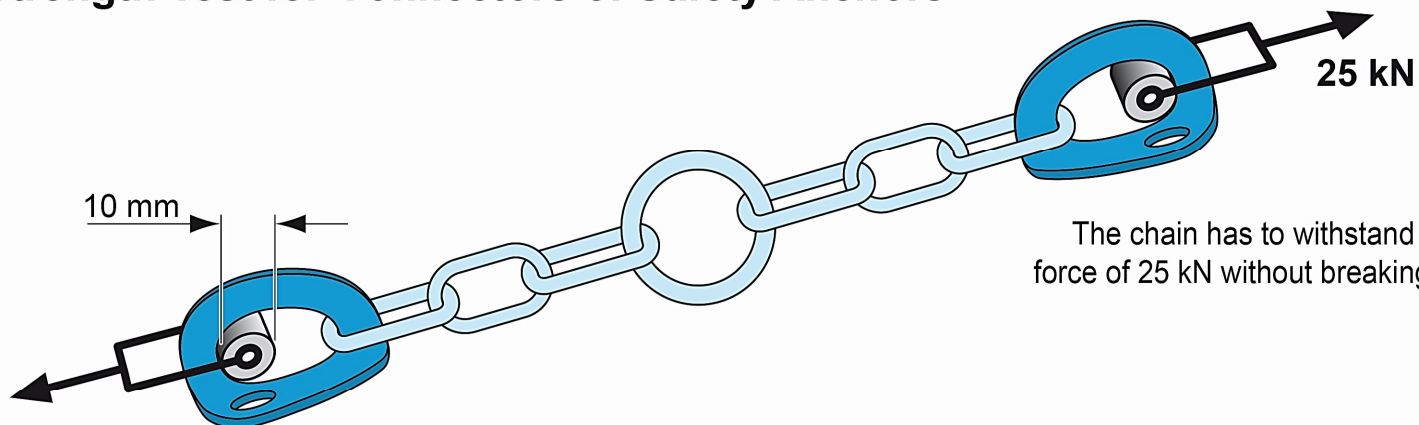
The eye shall
be large enough
that two bolts as
shown can be inserted



This representation does not provide full details. Read the Note at the head of page 1.

© UIAA 2020

Strength Test for Connectors of Safety Anchors



Rock anchors class and environment characteristics

class	suitable environment
SCC	aggressive environment, e.g. coast, limestone, industry
GC	outdoor, but no SCC expected
LC	indoors

The class has to be marked on the anchor

Designed by Georg Sojer